



# GMT MONTHLY MEMBERSHIP PROGRESS REPORT

Results as of: 1/31/2020

Multiple District 33

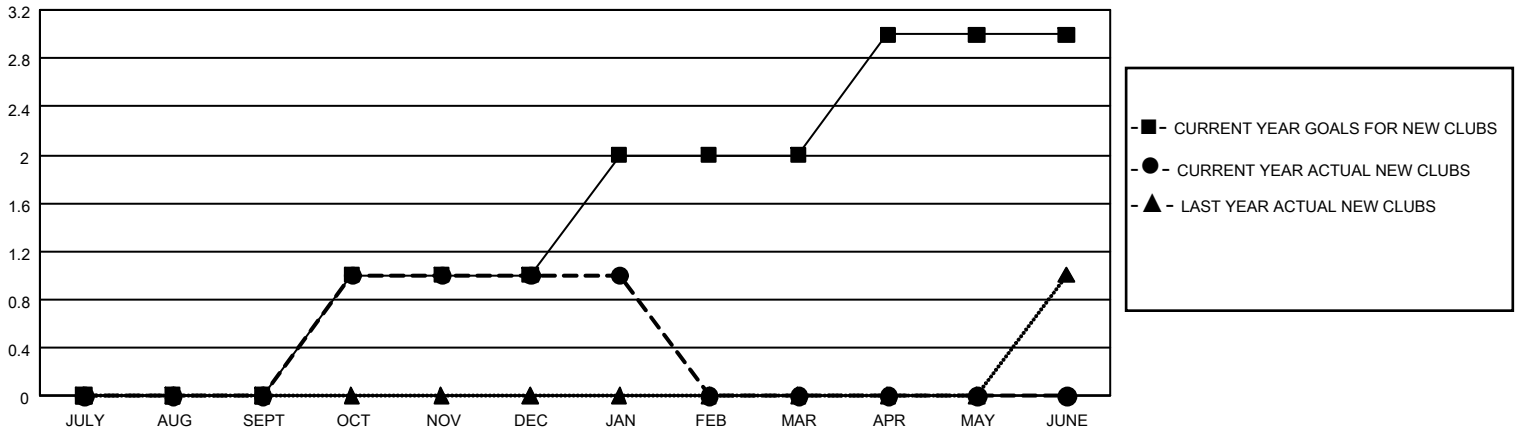
LOCATION: MASSACHUSETTS

GMT: OPEN

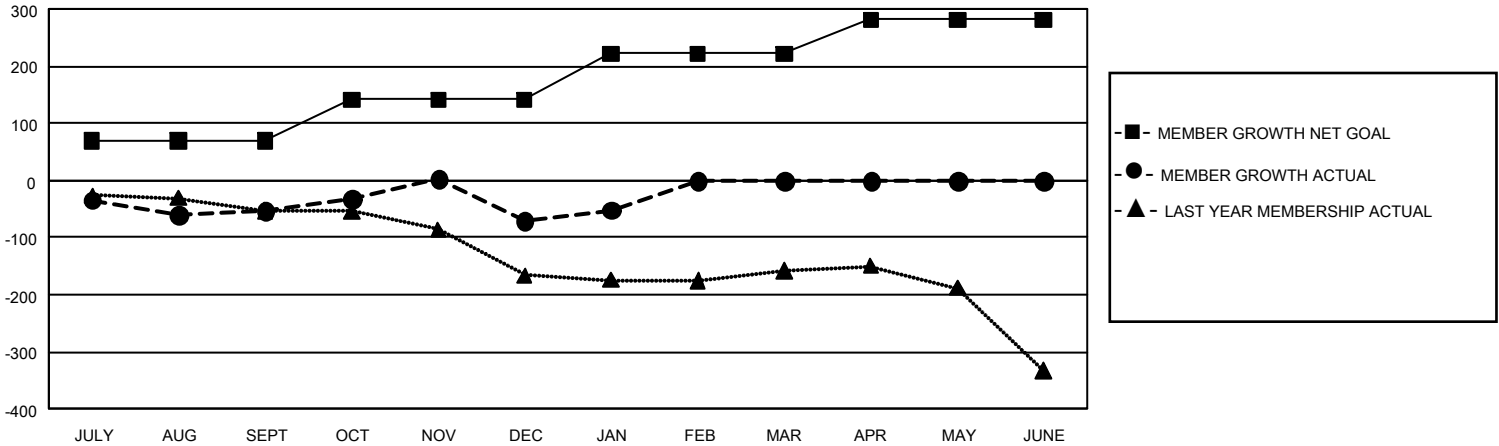
GMT CA 1

| Clubs                 |               |           |               | Members               |                        |                      |  |
|-----------------------|---------------|-----------|---------------|-----------------------|------------------------|----------------------|--|
| RESULTS FOR 2019-2020 |               |           |               | RESULTS FOR 2019-2020 |                        |                      |  |
| QUARTER               | NEW CLUB GOAL | NEW CLUBS | DROPPED CLUBS | QUARTER               | MEMBER GROWTH NET GOAL | MEMBER GROWTH ACTUAL | DROPPED MEMBERS ACTUAL (including transfers) |
| JULY/AUG/SEPT         | 0             | 0         | 2             | JULY/AUG/SEPT         | 210                    | 100                  | 134  |
| OCT/NOV/DEC           | 3             | 1         | 1             | OCT/NOV/DEC           | 213                    | 180                  | 191  |
| JAN/FEB/MAR           | 3             | 0         | 0             | JAN/FEB/MAR           | 243                    | 74                   | 51   |
| APR/MAY/JUNE          | 3             | 0         | 0             | APR/MAY/JUNE          | 177                    | 0                    | 0  |

GOALS AND ACTUAL NEW CLUBS CUMULATIVE



GOALS AND ACTUAL MEMBERS CUMULATIVE



|   |  |                                 |                |
|---|--|---------------------------------|----------------|
| <b>DROPPED CLUBS: 3</b>                                   | 103 CLUBS OF 221 ADDED 1 OR MORE NEW MEMBERS | <u>GENDER DISTRIBUTION</u>      |                |
| <u>DROPPED MEMBERS</u>                                    |  | MALE                            | 4,520 (64.73%) |
| DECEASED  | 54   | FEMALE                          | 2,463 (35.27%) |
| CLUB CANCELLED  | 12   | TOTAL FAMILY UNIT MEMBERS 1,134 |                |
| OTHER   | 310  |                                 |                |
| <b>TOTAL</b>  | <b>376</b>                                   |                                 |                |
| <a href="#">CLICK HERE FOR CUMULATIVE MEMBERSHIP DATA</a> |  |                                 |                |
|   |  |                                 |                |